

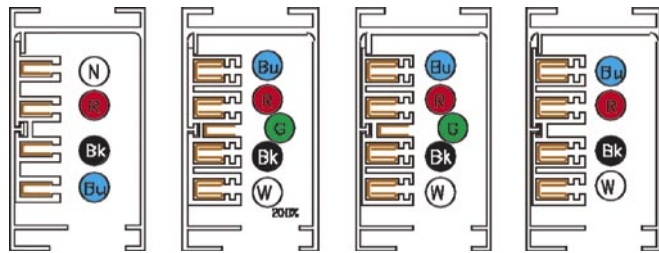
Mission Critical Power Distribution for your Data Centre



- ▶ **Modular Track Busbar System**
- ▶ **Power via Twist & Lock Plug In**
- ▶ **Up to 400 Amps - 415 Volts**
- ▶ **Easily Reconfigurable**
- ▶ **No Under Floor Cabling**

Starline Track Busbar – Scalable and Secure Power for your Data Centre

Currently in mission critical, R & D and testing environments any short interruption or malfunction of the power supply can have catastrophic effect on IT operations, company data and critical transactions. It is, therefore, necessary to ensure busbar systems are dependable while offering the flexibility to make changes



when needed. Additionally, space restrictions and rack density are becoming more important when planning for the future. R&D as well as live data centres often need to be reconfigured to real world scenarios or to update hardware. Starline Track Busbar provides solid and maintenance free connections while allowing for speedy installation and more flexibility than traditional cable whips and panel boards (PDUs).

Easy Installation and reconfiguration

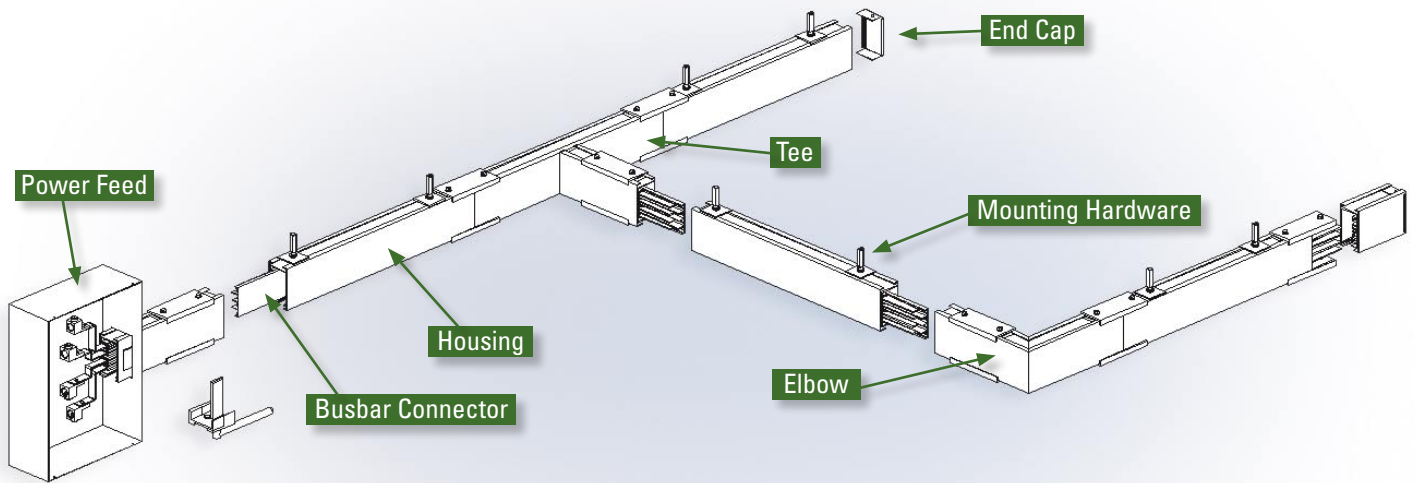
Starline continuous access busbar allows for power plug-ins to be placed where they are required, not at predefined locations. Power plug-ins are configured to customer requirements with 16A, 32A or 63A single and/or three phase connectors. Available with 100, 225 or 400 Amps and up to 415 volts, Starline can support any size of data centre. The connections between the tracks consist of a patent protected spring pressure connection which is screw and bolt free, preventing loose connections or flaking. The same connections are used to connect the power plug-ins to the busbar ensuring a secure and solid connection at all times. The entire busbar system is easy to assemble and dismantle meaning that tracks can be inexpensively installed, moved and reused regardless if it has been installed overhead or under the raised floor.

The plug-ins are designed to allow for individual requirements. Current monitoring, which can be accessed via RS232, IP or Modbus, can be included per rack or per busbar run. The number of and type of connectors is determined by your own needs. For example, a 16A single phase connector can be situated next to a 32A three phase connector in the same plug-in. Even drop cords and hard wire options are available. If redundancy is required, then a second parallel busbar is added. Starline is UL857 and UL94-V0 rated, fulfils the EN 60439-1(-2) and IEC 60439-1(-2): 2000 standard and is ISO 9001-2000 compliant.

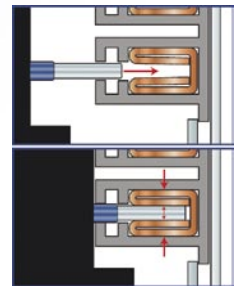
Versions and Options

System-No.	Ampere	Volt	Neutral	Isolated Ground	Dimensions
GM100	100	415	100%	No	106mm x 66mm
GM100G	100	415	100%	Yes	106mm x 66mm
GM100NG	100	415	200%	Yes	106mm x 66mm
GM225	225	415	100%	No	106mm x 66mm
GM225G	225	415	100%	Yes	106mm x 66mm
GM400/GM400G	400	415	100%	No/Yes	128mm x 145mm
GM400N/GM400NG	400	415	150%	No/Yes	128mm x 145mm

Technical Design of Starline Track Busbar



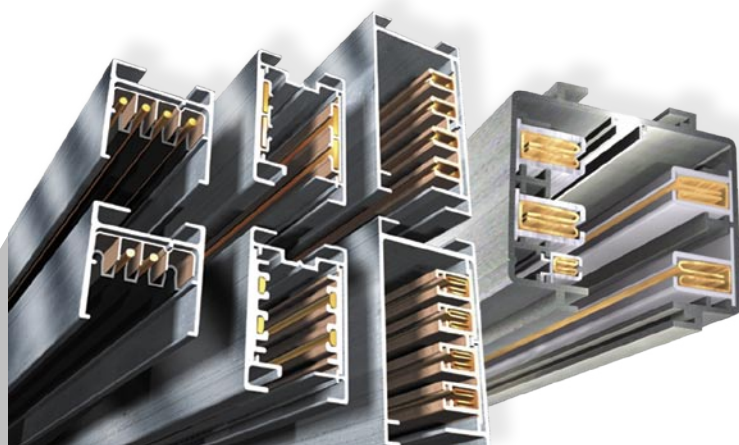
Patented spring pressure connections for secure plug-in connections.



Reliability – is one of the strengths for all Starline Track Busbars. Patented spring pressure connections guarantees secure and maintenance free contacts at all times without any heat build up. Simple Twist & Lock plug-ins ensure a continuous supply of power for mission critical applications.

Scalability – is provided through Starline’s modular design which enables every run to be extended and split as required. Once installed, adding or moving plug-ins along the continuous access busbar ensures connections can be added wherever you need them, whenever you need them. Every reconfiguration can be carried out without the need of an electrician increasing the return on investment with every change.

Flexibility – means you are able to configure the system to your exact requirements. Starline Busbars are available rated to 100, 225 or 400Amps. Plug-ins are available with multiple 16, 32 and 63A single or three phase connections and any combination thereof.

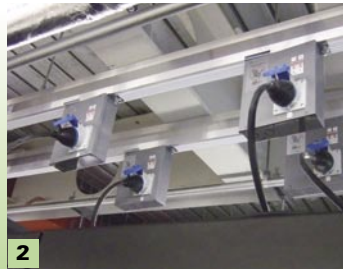


Starline: Your first choice for mission critical power distribution

Track Busbar vs. Cable – the difference between traditional and cutting-edge power distribution



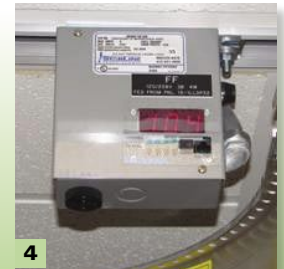
Each power module is circuit protected with circuit breakers or fuses right at the point-of-use.



Starline Busbar provides power to rack rows used in data centres, development and testing sites, and manufacturing facilities. It replaces bulky, fixed position hardwired outlets with flexible connections where you need them.

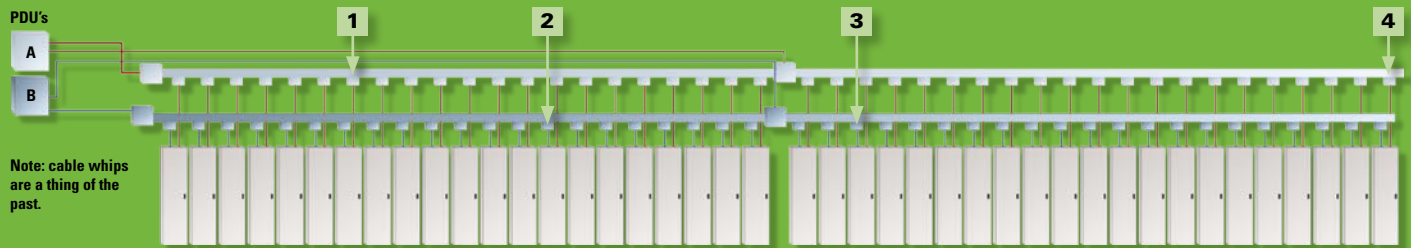


Starline offers a wide variety of plug-in modules to meet specific needs. They can be relocated in seconds without power interruption or a limitation of where to place them. Plug-ins are available with fixed or drop power cords depending on your specific requirements.

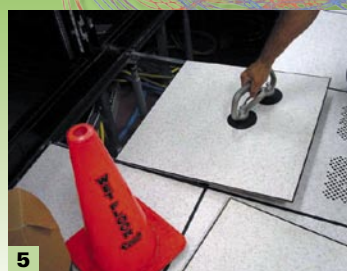
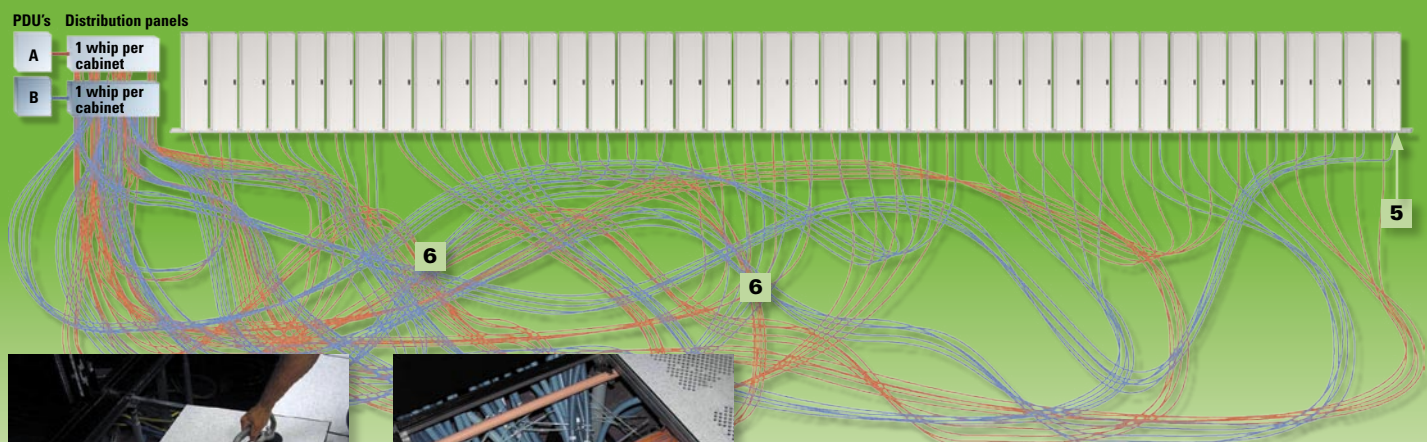


Power monitoring is available to measure phase loads, provide alarm functions, onboard LED displays, and/or remote communication. Monitoring can be built into the end feed unit or as a plug-in monitor.

Compare Starline Track Busbar, without the need for cable whips, to...



...the chaos often found with traditional PDUs and cable whips under the floor



A cable "jungle" running in every direction is difficult to follow and expensive to move. The jungle is often accompanied with power interruptions through frequent maintenance and the adding of new cables. In addition it blocks valuable cooling air space!

Starline – Applications and Benefits

The Starline power distribution solution is ideal for use in IT environments, data centre, test and R&D labs with mission critical security, reliability, flexibility and scalability requirements. Every interruption of the power supply can have catastrophic effects on IT operations, company data and critical transactions. With Starline you can be assured that the power supply is working all of the time.

Mission Critical Data Centres

The flexible bus design, the flexible plug-in locations, the option to choose the level of redundancy for your power distribution system and the easy extension capacities of the Starline solution are some of the reasons, why a large number of well known companies trust in Starline. Further economic aspects play a big role: The high durability and ease of both reconfiguration and relocation make Starline solutions the busbar with the lowest TCO in the market. Significant time and cost savings result when using Starline as you do not need to consult an electrician when changing your power distribution system. Finally the very short installation time, coupled with a few seconds to add another plug-in to the system, guarantees efficient time usage by the technical staff allowing them to spend more time on other important tasks.



Test-Labs and R&D environments

R&D and test environments often suffer from spatial constraints and dense server rooms packed with hardware and cabinets. Additionally, the systems have to be constantly configured and reconfigured to simulate real world scenarios in order to properly test and develop. In these environments Starline has proven its value a thousand times. It enables the IT staff to easily and quickly reconfigure their power distribution system without fighting with complex and confusing cabling or using tools. Ideal for high density server rooms: The Starline plug-ins offer multiple power connectors per unit for cycling power to multiple racks or cabinets. Working with the plug-ins is safe and secure because every unit contains circuit breakers and optionally multiple physical fuses. For very complex requirements we offer customisation of your plug-in to fulfil all your specific needs.



Starline – Your First Choice! Reliable Power is the basis for smooth operations.

Experience Starline:

You would like to know more - and at once? Click on the video image to the left and you will be forwarded directly to the Starline Demo-Video.

Live: Starline at the SUN Datacenter:

Listen and see Dean Nelson, Senior Director of Global Design Services at SUN, sharing his Starline experience.

Your personal consulting service for Starline:

For more information and a comprehensive services please contact us at +44 (0)20 8991 6200, info.uk@daxten.com or visit www.daxten.co.uk

About Daxten

Daxten was founded in 1994 as Dakota Computer Solutions. Today Daxten is a Value Add Distributor for IT management, cooling optimisation and data centre facilities solutions from Austin Hughes, Avocent (Cyclades), Dataprobe, Digi, Minicom, PlenaFill/PlenaForm, Raritan (Peppercon), Rose, Server Technology, Triad, Universal Electric (Starline), Upsite Technologies (KoldLok), Uptime Devices. In addition Daxten is a leading manufacturer of its own connectivity product lines. The company has facilities and subsidiaries across Europe and the USA. Daxten is specialist of cutting-edge cooling optimisation and power distribution solutions which improve the energy efficiency and reliability of the data centre. As a provider of high-end KVM, connectivity and infrastructure management solutions it is our mission to support IT managers worldwide, to ease their working life and to protect their companies against critical downtime. In Europe Daxten is headquartered in London and Berlin. For further information please visit www.daxten.co.uk or www.daxten.com.

Version: DA-2009-UK Starline brochure V1
Subject to change without notice.

Daxten and the Daxten-Logo are registered trademarks of Daxten Industries.
All other marks are property of their respective owners.
Copyright © 2009 Daxten Industries. All rights reserved.