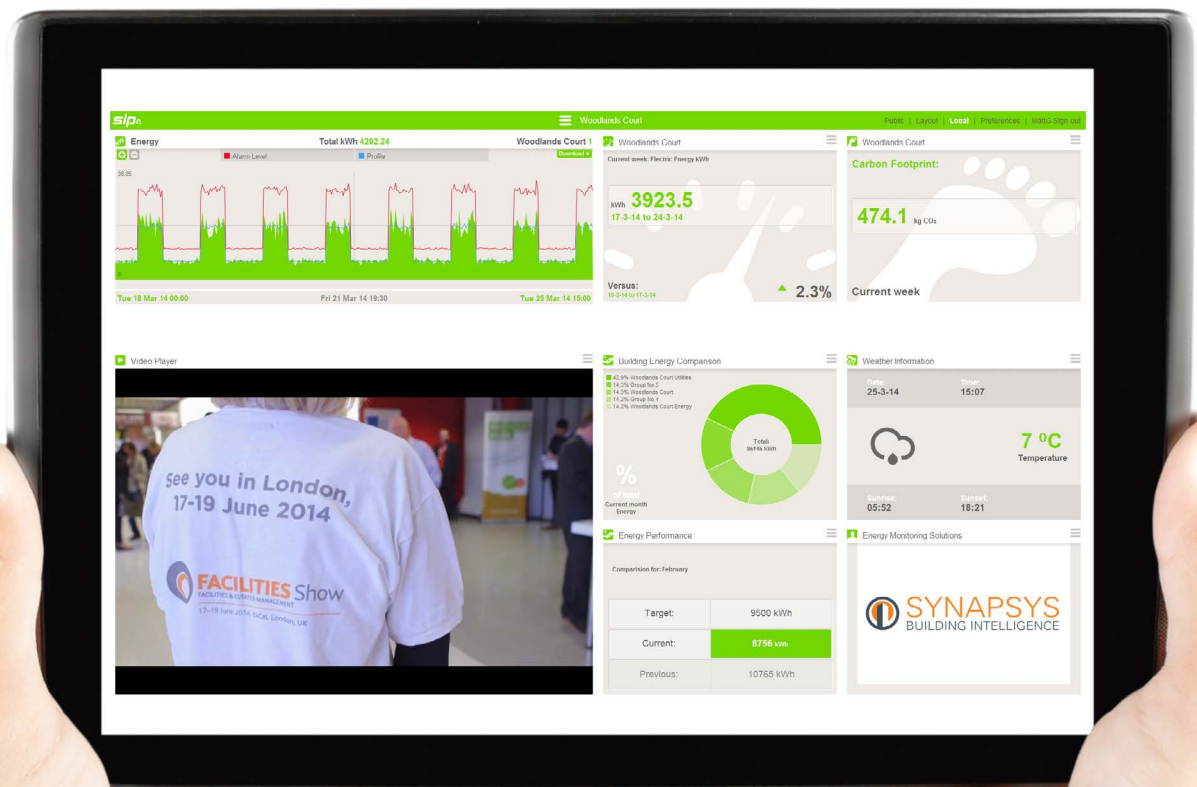


# sip<sup>e</sup>

Simply targeting your energy....



## Real time monitoring to help you understand your energy

### SIPe Energy Monitoring, Targeting & Display

SIPe is the energy variant of our successful and established range of SIP interface devices and works on the same principals, delivering a simple but effective solution to meet your exact requirements.

The energy and building controls industries have evolved and grown significantly in recent years and engineering competency and skill levels have not kept pace. The SIP has been designed to be easy to use and commission across a broad range of competency and our SIPe energy monitoring, targeting & display solution with configurable local and public dashboards has been developed so that it can also be configured and managed by end users.

- Easy to use with web based configuration
- Simplifies monitoring and interfacing
- Reduces engineering time and cost
- Reliable proven platform
- Integrates with a wide range of technologies and protocols
- Enables you to use a wide range of engineering competency



SIPe provides you with **live data** about your energy consumption and allows you to target different parts of your network for improvement. The system benefits from the intuitive control and configuration features from our established SIP BMS Interface product range.

#### **SIPe is a fixed cost on site solution that is tailored to your exact needs.**

Why pay for ongoing subscriptions for a remote energy monitoring service when you will probably only use a small percentage of the functionality you will be paying for?

If you have meter networks that you need to monitor and target the **SIPe M-Log** is the product you need and if you have an on site BMS that is currently monitoring pulse meters the **SIPe B-Log** will collate these data points. When you also need to interface sub metering with your BMS the **SIPe IF-Log** will also allow you to access your energy data independently to the BMS.

Using **SIPe Vision** all types of SIPe devices can be networked together to provide you with your tailored on site energy solution. Simply and effectively....

### SIPe at a glance

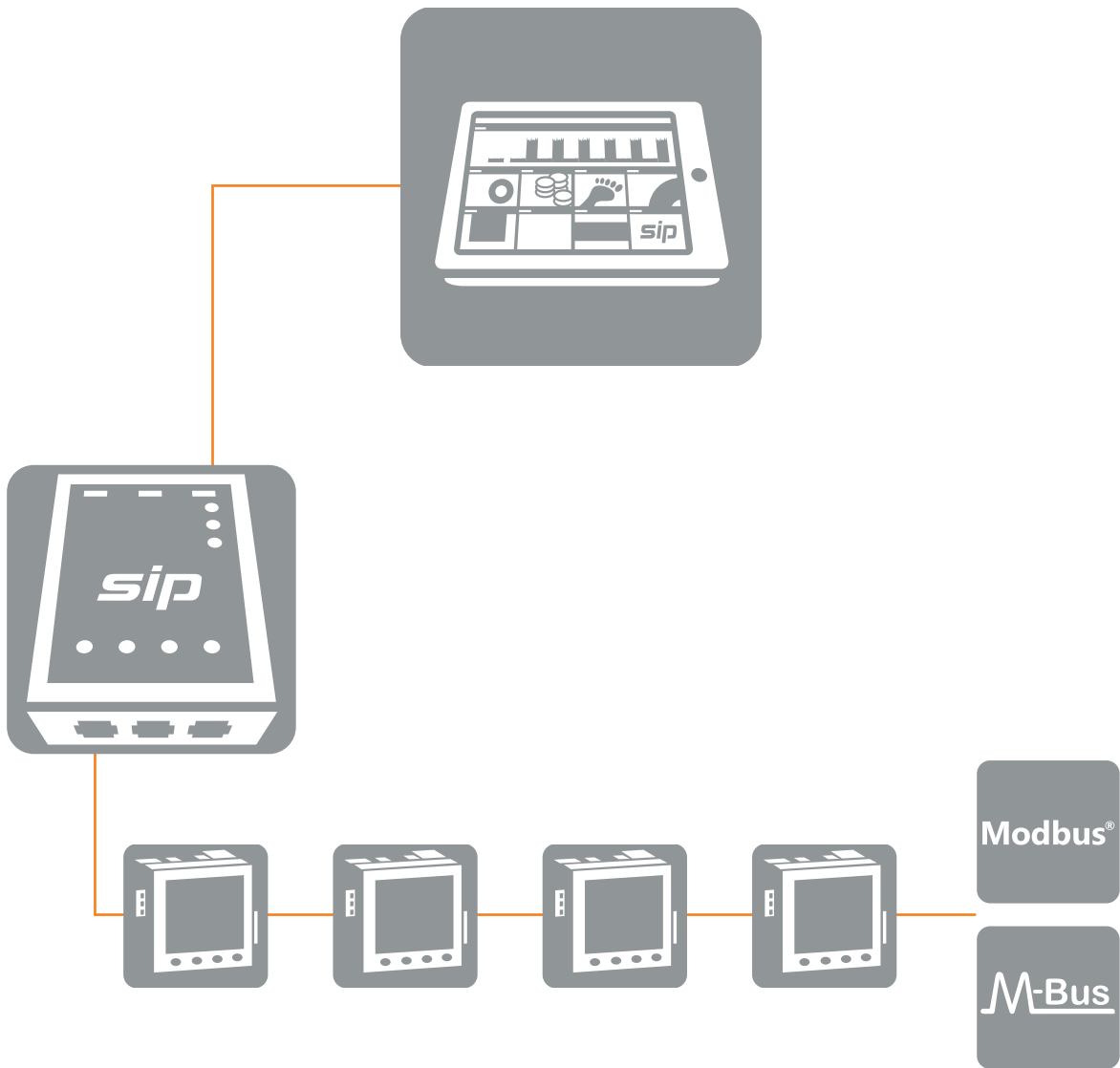
- Cost effective on site energy monitoring, targeting & display solution for all buildings
- No software licences, unlimited users, no more remote servers
- Direct monitoring of energy & utilities
- Simple web based configuration
- Direct integration with energy management software, billing software and performance monitoring platforms
- Full integration with BMS

# **sip**<sup>e</sup> M-Log

## Meter Logger

With the SIPe M-Log you can define, collate and display energy data and performance from a single network of ModBus or M-Bus meters. Pulse meters can be included using pulse acquisition modules.

This offers a stand alone solution or can be networked with other SIPe products to provide a cost effective, future proofed “live time” energy monitoring and targeting solution.



Before you can reduce your energy consumption you need to understand it...

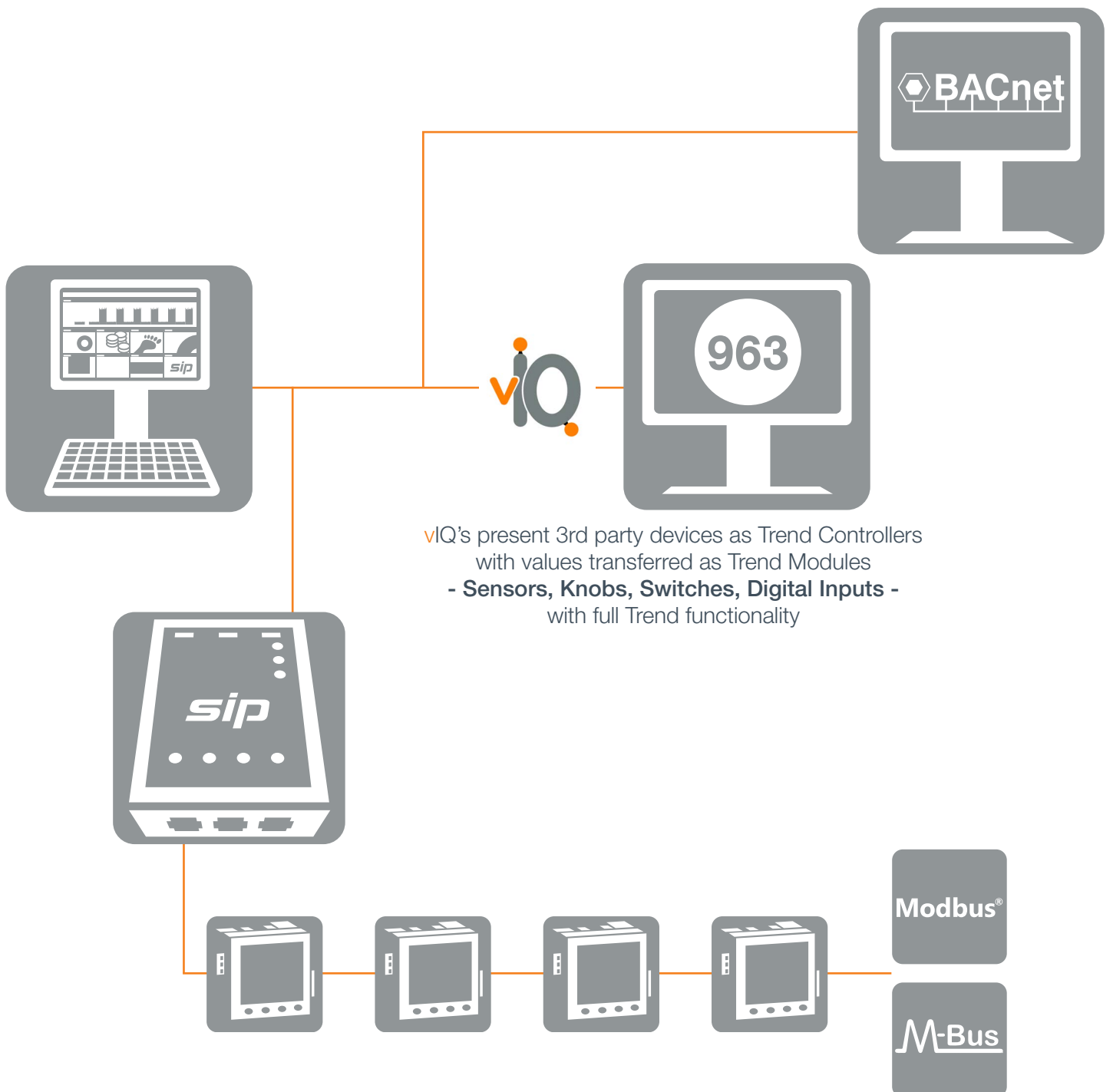


## Interface Logger

Our existing range of Trend and BACnet interfaces now include the same energy monitoring & targeting functionality as the SIPe M-Log.

Energy data points from ModBus or M-Bus meters can be displayed as graphs and included in the aM&T system, Whilst any additional registers from the meters can be interfaced to your Trend or BACnet BMS.

SIPe IF Loggers can be networked with other SIPe products.



vIQ's present 3rd party devices as Trend Controllers with values transferred as Trend Modules  
- **Sensors, Knobs, Switches, Digital Inputs** -  
with full Trend functionality

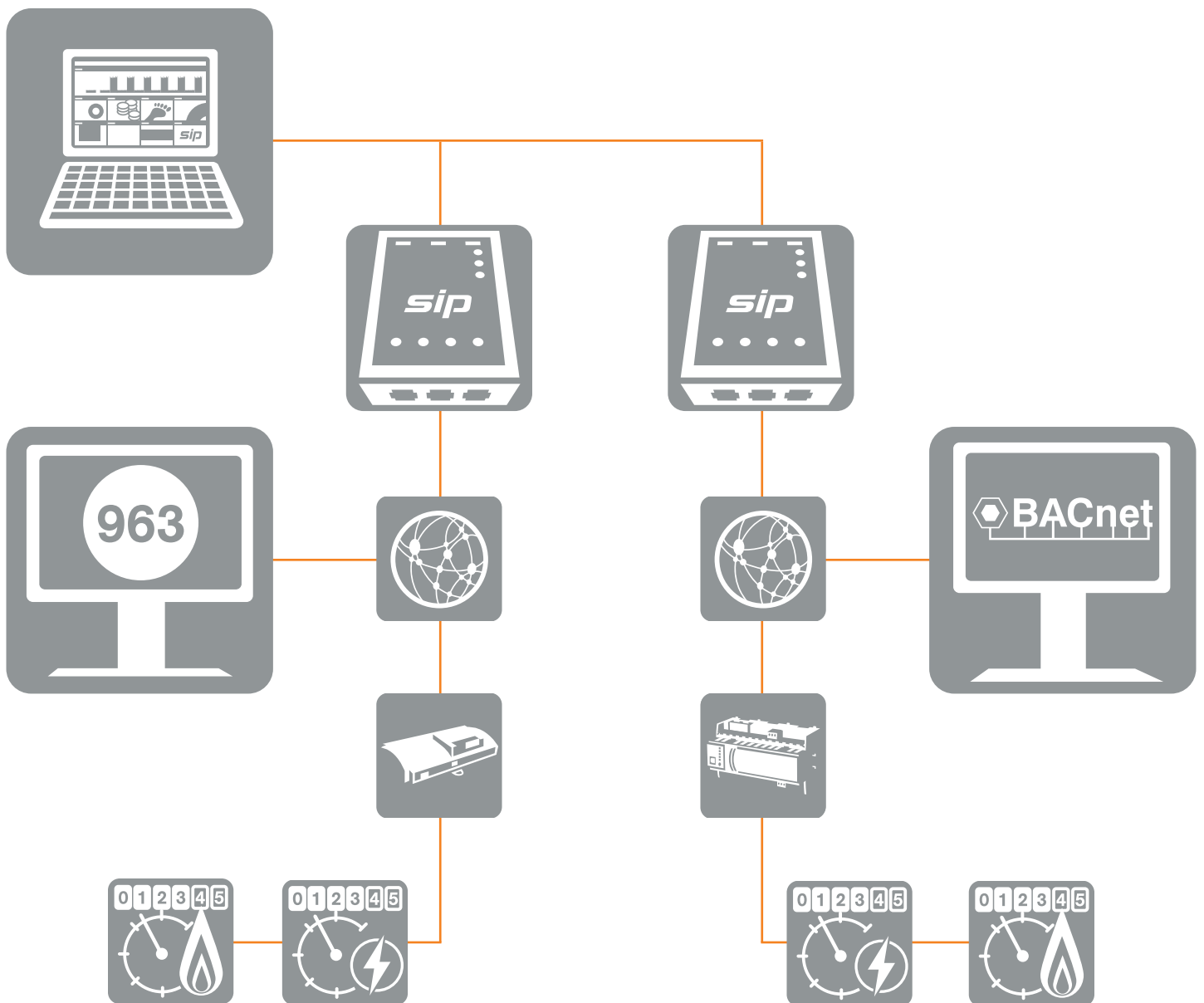
# Effectively target areas to reduce consumption and monitor results



## BMS Logger

Pulse meters are frequently connected to and monitored by an onsite BMS.

The SIPe B-Log sits on the BMS network with energy data points being monitored by the BMS, from pulse output meters for example, are learnt by the SIP and can be displayed as graphs and included in the Energy Monitoring system.



# **sip**<sub>e</sub> Vision

SIPe Vision provides the system portal through which different SIPe products can be connected and networked to provide a fully featured energy monitoring & targeting system.

Enhanced features and connectivity options are provided by installing a SIPe Vision including a configurable public display option that includes energy graphs, financial calculations, energy & utility comparisons, energy performance, news feeds & weather information.

### The SIPe vision product provides

- Public displays
- Local user dashboards
- Virtual grouping
- Ability to network multiple and different SIPe variants



SIPe Vision



SIPe Interface Logger



SIPe Meter Logger



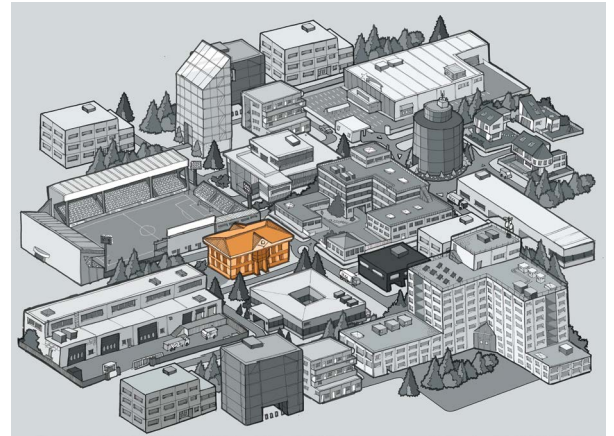
SIPe BMS Logger

# SIPe product comparisons at a glance

| Features                     | <b>SIPe M-Log</b><br>Define, collate and display energy data from a single network of Modbus or M-Bus meters. | <b>SIPe IF-Log</b><br>Our existing range of Trend and BACnet SIP interfaces now include energy monitoring and targetting functionality. | <b>SIPe B-Log</b><br>Data points that are being monitored by the onsite BMS, from pulse meters for example, can be displayed. | <b>SIPe Vision</b><br>The SIPe Vision provides added functionality, the networking of SIP's and public display options. |
|------------------------------|---|---|---|---|
| Energy data graphs           | ■   | ■   | ■   | ■   |
| Comparison graphs            | ■   | ■   | ■   | ■   |
| Energy performance data      | ■   | ■   | ■   | ■   |
| Dynamic web page scaling     | ■   | ■   | ■   | ■   |
| Public display               |   |   |   | ■   |
| Configurable public display  |   |   |   | ■   |
| Financial calculations       |   |   |   | ■   |
| Group comparisons            |   |   |   | ■   |
| Energy                       |   |   |   | ■   |
| Video player                 |   |   |   | ■   |
| Baseline comparison          |   |   |   | ■   |
| Image display                |   |   |   | ■   |
| Utility performance          |   |   |   | ■   |
| Data value display           |   |   |   | ■   |
| Carbon footprint             |   |   |   | ■   |
| Carbon performance           |   |   |   | ■   |
| News feed                    |   |   |   | ■   |
| Weather data                 |   |   |   | ■   |
| Sunrise/Sunset data          |   |   |   | ■   |
| Network time settings        |   |   |   | ■   |
| Alarms displayed             | ■   | ■   | ■   | ■   |
| Alarm setting & adjusting    | ■   | ■   | ■   | ■   |
| Email exception reports      |   |   |   | ■   |
| Manual CSV data download     | ■   | ■   | ■   | ■   |
| Scheduled download to FTP    | ■   | ■   | ■   | ■   |
| MySQL Connection 3rd party   | ■   | ■   | ■   | ■   |
| Scheduled CSV emails         | ■   | ■   | ■   | ■   |
| CSV data import              |   |   |   | ■   |
| Email end of month reports   |   |   |   | ■   |
| Interface to Trend           |   | ■   |   |   |
| Interface to BACnet          |   | ■   |   |   |
| Data points from Trend       |   |   |   |   |
| Data points from BACnet      |   |   |   |   |
| Meter grouping Single SIP    | ■   | ■   | ■   | ■   |
| Meter grouping multiple SIPs |   |   |   | ■   |

Today's built environment serves a diverse range of users and purposes, whether it is maintaining constant conditions in a data centre hall or comfort conditions in a school room, for a building to perform properly the building technologies within need to work together.

Now that almost all building technologies come with controls fitted, the challenge is to enable these to communicate together effectively and to present key information to a broad range of building users, utilising the many smart display technologies, as well as transferring primary data to enterprise applications for analysis and billing.



Synapsys Solutions' systems reveal the operation of a building to its users. This insight helps our customers understand, improve and optimise how their building performs. Our products offer simplicity of use and ease of engineering, and by putting the users in control, we help to create more efficient, sustainable and functional buildings.



SIPp is the power monitoring variant of our successful and established range of SIP interface devices and works on the same principals, delivering a simple but effective power monitoring solution to meet your exact requirements.



SIPd is the data acquisition variant of our SIP interface device and works on the same principals, delivering a simple but effective solution for acquiring, logging, exporting or integrating your Trend or BACnet BMS data.



BMS interfaces

In addition to the range of SIPe energy products we supply a comprehensive range of Trend interface products on the SIP platform together with IQ3XNC and SXNC interfaces for a wide range of 3rd party devices. Working in partnership with the UK's leading Systems Integrators and Controls Houses our interfaces have been used in projects throughout the UK and Europe. Our BMS interface range now includes ModBus/M-Bus to BACnet BMS.



OEM controls

Synapsys Solutions are Trend's UK OEM agents with many years history and experience of supplying and developing OEM controls for manufacturers and distributors of HVAC and other building plant and equipment to integrate with Trend BMS. In addition to supplying standard Trend OEM Controls applications we have extensive experience of developing bespoke controls solutions for manufacturers and we offer full technical and engineering support and resource.



Our partner company Open Technology, utilise our technologies, R&D and production facilities to manufacture, install and maintain intelligent lighting control systems, that are tailored for a buildings exact needs to deliver excellent energy savings, energy efficiency and functionality. For information about the LiGO control system please visit: [www.opentechnologyuk.com](http://www.opentechnologyuk.com).